

Deep groove ball bearing kit TMMD 100



[Mechanical tools](#)

[Heaters](#)

[Instruments](#)

[Lubricants](#)

[Lubricators](#)

[Hydraulic tools](#)

[Demo units](#)

[Index](#)

Application

The TMMD 100 is especially designed to dismount deep groove ball bearings with an interference fit on both rings. The puller can be used to dismount deep groove ball bearings from both blind housings and shaft applications. In addition to dismounting open bearings, the TMMD 100 can be used to dismount sealed bearings after the removal of the seal. Depending on the force required, the TMMD 100 could be also used to dismount some Y-bearing units.

Description

The new deep groove ball bearing puller kit, TMMD 100, contains 6 sets of different size puller arms, 2 spindles and 1 handle packed in a carrying case. Each arm-set includes 3 puller arms on which the designation is laser-engraved for easy identification. The colour-coded springs in each arm set also facilitate easy and quick identification. A language-free Instruction-for-Use booklet, containing bearing selection chart, is also included in the kit.

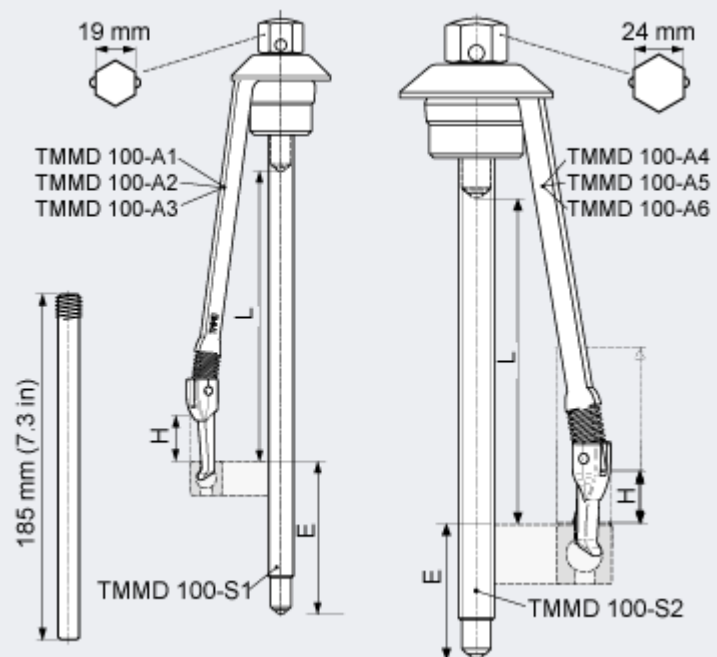
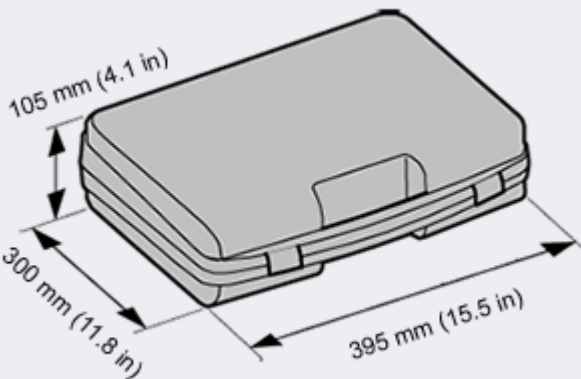


The TMMD 100 suits the following bearing series and sizes:

Bearing designation	Shaft diameter	
	mm	inch
6000 - 6020	10-100	0.4-3.9
6200 - 6218	10-90	0.4-3.5
6300 - 6313	10-65	0.4-2.6
6403 - 6410	17-50	0.7-2.0
62/22, 62/28, 63/22, 63/28	22, 28, 22, 28	0.9, 1.1, 0.9, 1.1
16002, 16003, 16011	15, 17, 55	0.6, 0.7, 2.2
16100, 16101	10, 12	0.4, 0.5

Technical data

	L		H		E	
	mm	in	mm	in	mm	in
TMMD 100-A1	135	5.3	16	0.6	79	3.1
TMMD 100-A2	135	5.3	16	0.6	79	3.1
TMMD 100-A3	137	5.4	23	0.9	77	3.0
TMMD 100-A4	162	6.4	26	1.0	52	2.0
TMMD 100-A5	167	6.6	>52	>2.0	49	1.9
TMMD 100-A6	170	6.7	>100	>3.9	49	1.9



Selection table

DGBB bearing series	Spindle TMMD 100-S1			Spindle TMMD 100-S2		
	TMMD 100 A1	TMMD 100 A2	TMMD 100 A3	TMMD 100 A4	TMMD 100 A5	TMMD 100 A6

	A1	A2	A3	A4	A5	A6		
60..	6000 6001 6002 6003 6200	6004 6005 6006	6007 6008 6009 6010		6011 6012 6013	6014 6015 6016 6017 6018 6019 6020		
62..		6201 6202 6203	6204 6205	6206	6207 6208	6209 6210 6211 6212 6213 6214 6215 6216 6217 6309 6310		
63..		6300	6301 6302 62/22	6303 6304 62/28	63/22 63/28	6305 6306 6307 6308	6311 6312	6313
62/. 63/.								
64..						6403	6404 6405 6406 6407 6408 6409	6410
160..	16002 16003		16011					
161..	16100 16101							

Claw plate usage										
TMMD 100-A4			TMMD 100-A5			TMMD 100-A6				
6206	6011 6012 6013		6014 6015	6016 6017	6018 6019 6020		6212 6213	6214 6215 6216 6217 6309 6310	6218	
6303 6304		6305	6306	6307	6308			6311 6312		6313
62/28	63/22	63/28								
			6403		6404 6405	6406	6407	6408 6409		6410

Operating instructions

- Select arms and spindle with the aid of the selection chart.
- Turn the claw plates on the arms A4 to A6 to their neutral position.
- Insert one claw into the bearing.
- Turn back the appropriate claw plate for arms A4 to A6 as per selection table.
- Hook the arm under the elastic locking ring onto the spindle nut.
- Repeat steps 3 to 5 for the two other arms. Make sure the three arms are spread equally around the bearing.
- Inserting the handle into the spindle nut
- Apply the dismantling force onto the spindle with a ring type spanner (size AF 19 or size 24) while holding the handle.

Ordering details and replacement parts	
Designation	Description
TMMD 100	Deep groove ball bearing kit
TMMD 100-A1	Puller arm
TMMD 100-A2	Puller arm
TMMD 100-A3	Puller arm
TMMD 100-A4	Puller arm
TMMD 100-A5	Puller arm
TMMD 100-A6	Puller arm
TMMD 100-S1	Spindle, nut and handle
TMMD 100-S2	Spindle, nut and handle

